



Home | Privacy Policy | Dealer Locator | FAQs | Contact

BASKETBALL

SOCCER

VOLLEYBALL

Legacy Series Assembly Instructions

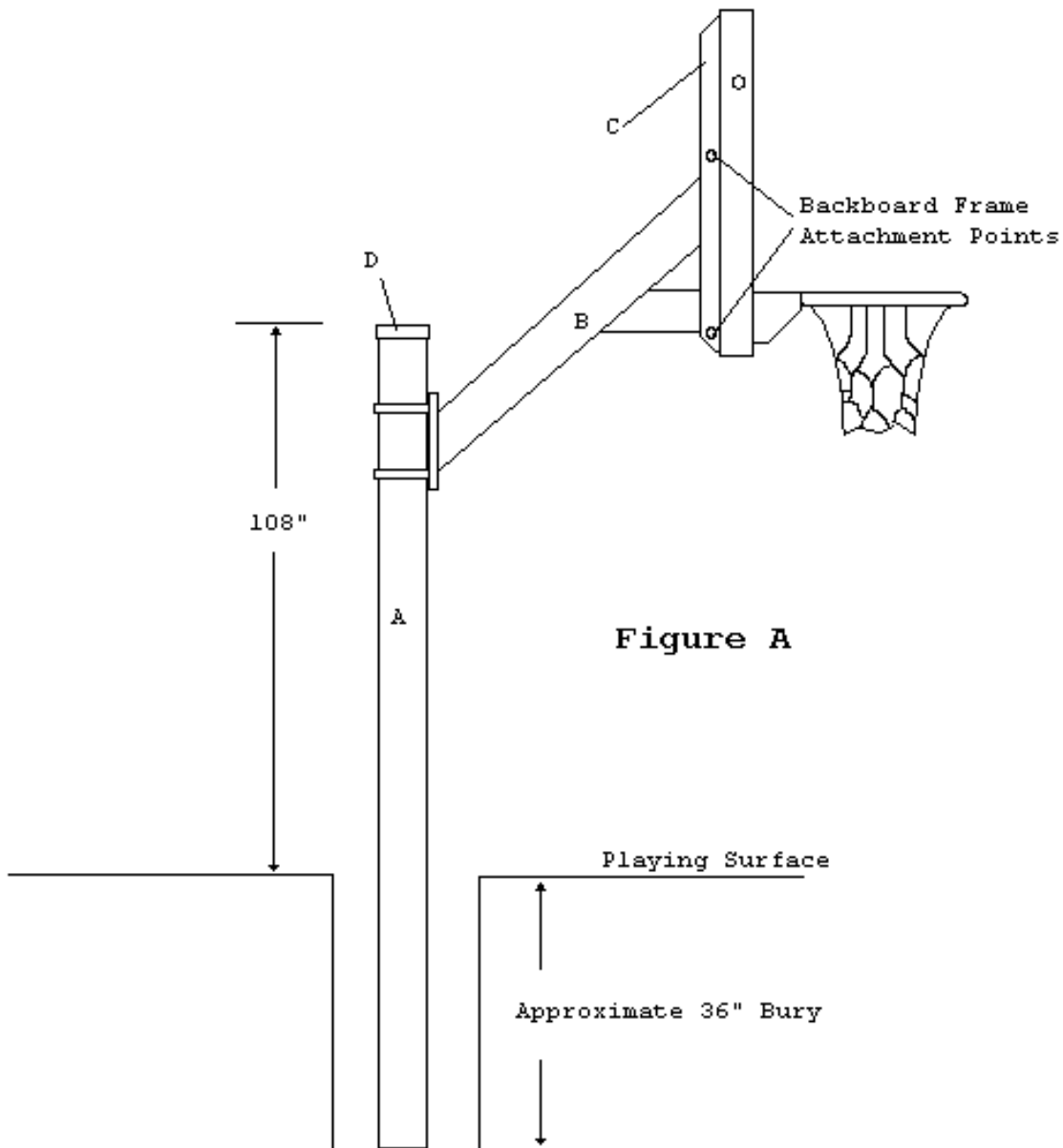


Figure A

Bill of Materials

A (1) Vertical Post	J (4) 1/2" Flatwasher
B (1) Extension Arm	K (8) 1"x 5/16" Machine Screw
C (1) Backboard Frame	L (8) 5/16" Flatwasher
D (1) 4" Post Cap	M (8) 5/16" Lockwasher
E (2) 1/2"x 4" Square U-Bolt	N (8) 5/16" Hex Nut
F (2) 1/2"x 8" Hex Bolt	
G (4) 1/2" Lockwasher	
H (4) 1/2" Hex Nut	
I (2) 1/2" Centerlock Nut	

NOTE: Immediately unpack all components and cross check against bill of materials. Report any shortages to First Team customer service at 1-888-884-6677.

1. Locate and dig a 12" minimum diameter x 36" deep hole.
 2. Fill hole with wet premixed concrete, insert vertical pole leaving 108" above desired playing surface. Vibrate to settle concrete. Place 4" square post cap on top of pole.
 3. Make sure post is straight and plumb. Brace while drying if necessary. Allow 24 hours minimum drying time before continuing assembly.
 4. Using 4"x 1/2" U-Bolts, lockwashers and nuts attach the extension arm to the vertical pole either at the desired rim height or at ground level. If you are mounting the extension arm so rim will be 10', the bottom of extension arm plate will be 94" from playing surface.
 5. Using (2) 1/2"x 8" hex bolt and (2) centerlock nut, attach H-Frame Backboard Mount (Part C) to Extension Arm (Part B) as shown in Figure A.
 6. Unpackage backboard. IF YOU PURCHASED AN ACRYLIC (plexiglass) BACKBOARD you will find two rubber gaskets packaged in with the backboard. One gasket goes behind the backboard between the H-Frame and the backside of the board. You will use the other gasket later in the assembly to be used on the face of the backboard between the rim and the face of the backboard. This eliminates any steel-to-acrylic contact.
- IF YOU PURCHASED A TEMPERED GLASS BACKBOARD you should find (4) grommets mounted in the four rim holes in the glass. If the grommets are not there, check in the box, they may have fallen out during shipping. If the grommets are missing and cannot be located, DO NOT PROCEED WITH INSTALLATION, call First Team immediately for replacements, 1-888-884-6677. Grommets prevent glass breakage when tightening rim bolts. Tempered glass backboard DO NOT include rubber gaskets discussed above.
7. Remove and discard the plastic shipping strap located at the top of the backboard frame joint.
 8. Hang backboard on H-Frame lining up the four holes at the top of the backboard frame with the four holes in the top of the H-Frame. Loosely attach board at these four points using the 5/16" hardware that came with the backboard.
 9. Loosely attach backboard to H-Frame at the four points along the bottom of the backboard frame as well. Use the 5/16" hardware provided in the bolt kit. Remember, if you purchased an ACRYLIC backboard, make sure to get the gasket sandwiched between the backboard and the face of the H-Frame (We recommend tape to hold it in place during assembly) Also, be sure the holes in the backboard and the holes in the extension arm are aligned so the rim bolts will be able to pass through when attaching rim.

IF YOU HAVE A TEMPERED GLASS BACKBOARD, check once again to make sure all (4) grommets are in place in the backboard rim mounting holes before proceeding.

10. Attach rim and net using hardware provided in the rim box. If you purchased an acrylic backboard, remember to place 2nd rubber gasket behind rim.

11. Tighten all bolts

12. If you attached extension arm at ground level, slide entire assembly to desired rim height and tighten U-Bolts making sure entire project is level and square. When sliding assembly, be careful not to scratch the paint on the vertical pole.

Tip: If you are setting the unit at 10 feet, the bottom of the extension arm will be bolted approximately 94" up the vertical post.

[home](#) | [privacy policy](#) | [dealer locator](#) | [faqs](#) | [contact](#)

(c) First Team Sports, Inc. 2007

Developed by: [Advanced Web Strategies](#)